

Getting Started with your New iPad



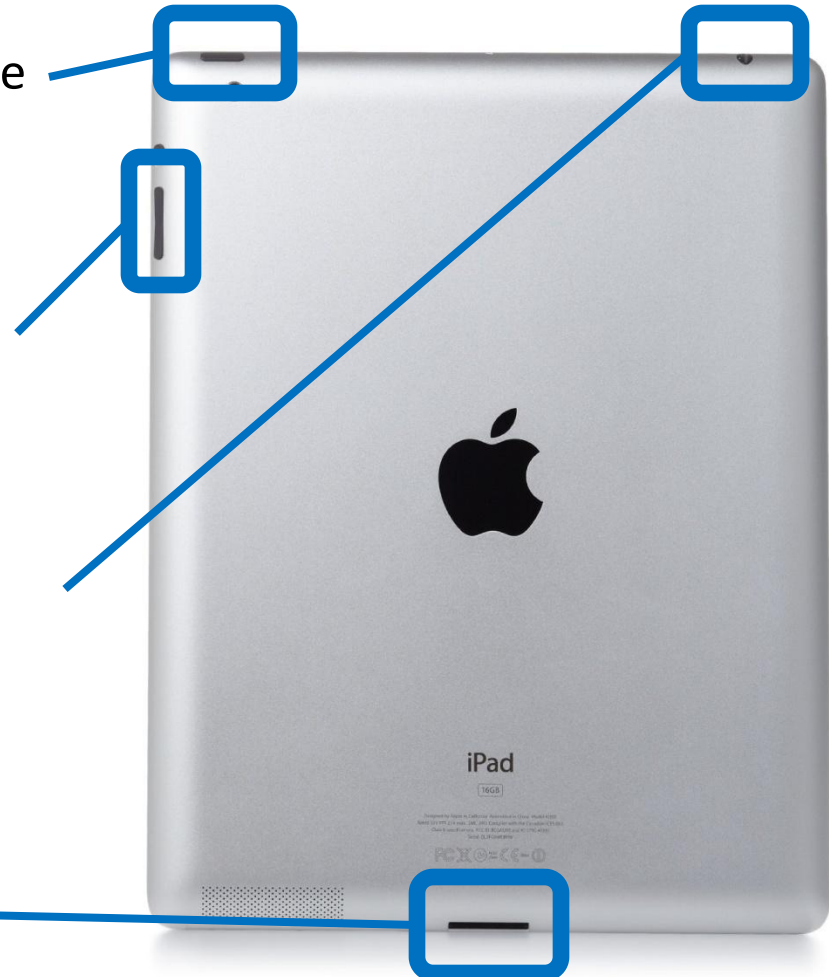
Back View

- **On/Off button:** use this to turn the iPad on.

- **Volume:** press the top to make volume go up; press the bottom to make volume go down.

- **Headset jack:** plug in your head phones here. Good for listening to sound while in a crowd.

- **Power cord connector:** plug your iPad into an electrical outlet to recharge the battery.



Front View

- **Face time camera:** you can take pictures or record videos of yourself with the camera app.
- **Apps:** Each square is a different application or “app” you can use to perform a different task.
- **Home button:** press this to close an app and return to the home screen. (On the home screen, you can see all the app squares.)



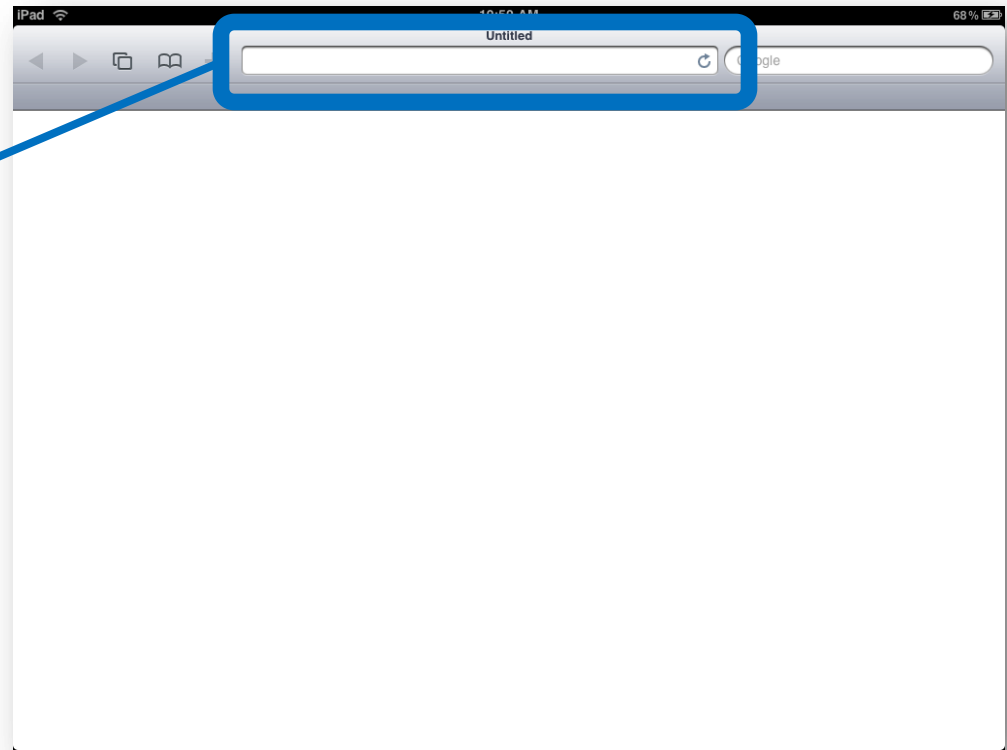
Keyboard

- To use the keyboard, you need to tap a text bar.
- For example, tap the **Safari app** to open the Safari web browser. The Safari web browser has text bars.



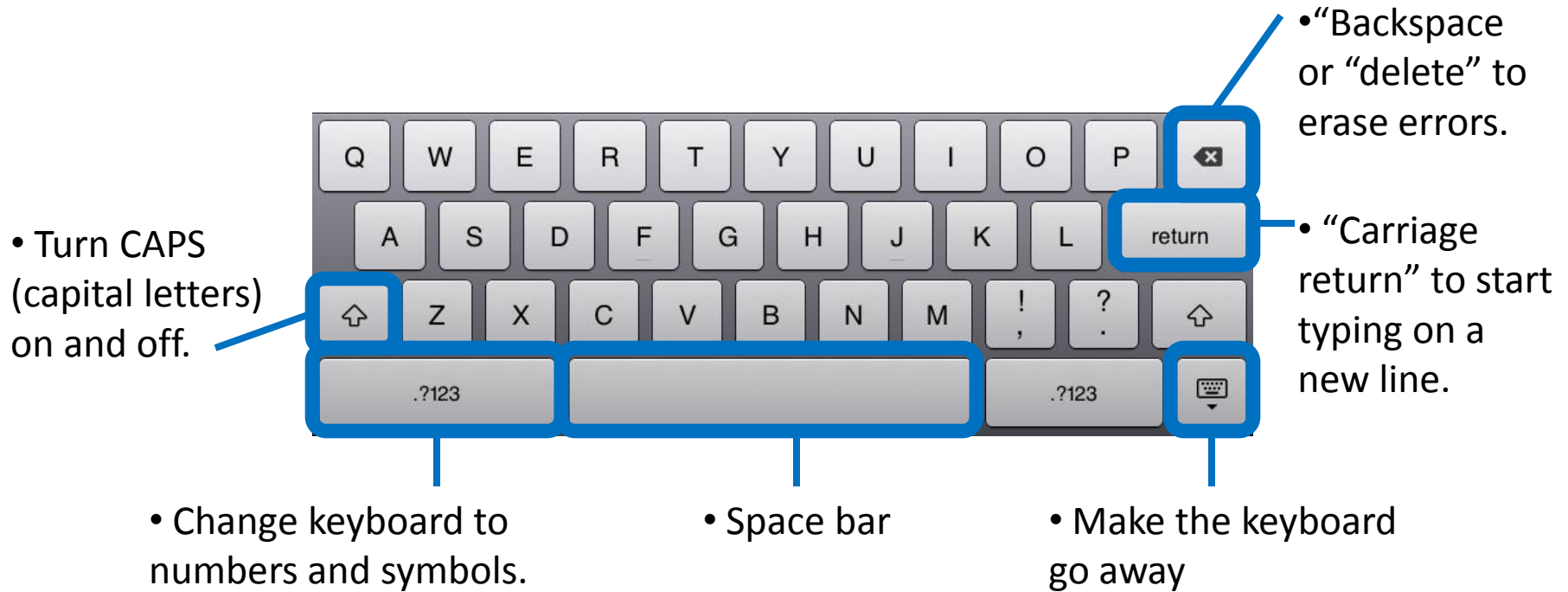
Keyboard

- Here is an open Safari web browser.
- Tap the **address bar**.
- The address bar is a text bar, so the keyboard will open.



Keyboard

- Some of the symbols on the keyboard are confusing. Let's take a look.



Keyboard

- When you're finished practicing with the keyboard, press the **Home button** to close the Safari app.



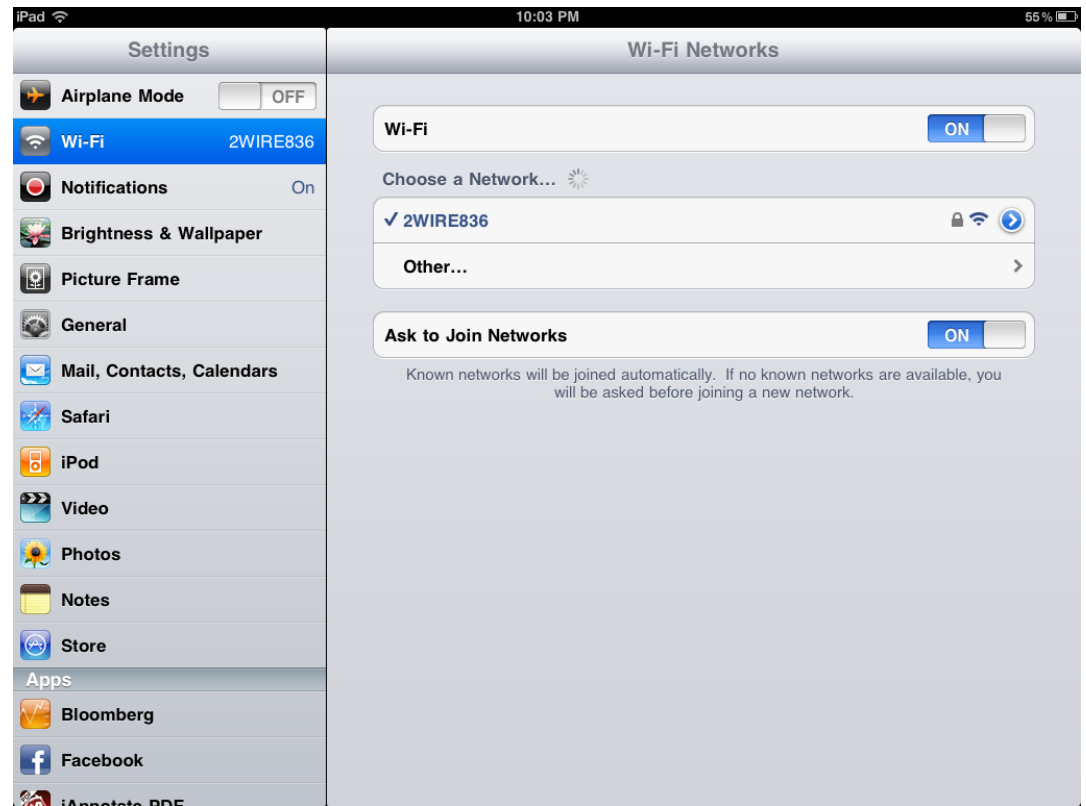
Using Wi-fi

- **Wi-fi** means a **wireless** connection to the internet.
- To start using wi-fi, tap the **Settings App** on your home screen.



Using Wi-fi

- Tap “Wi-fi.”

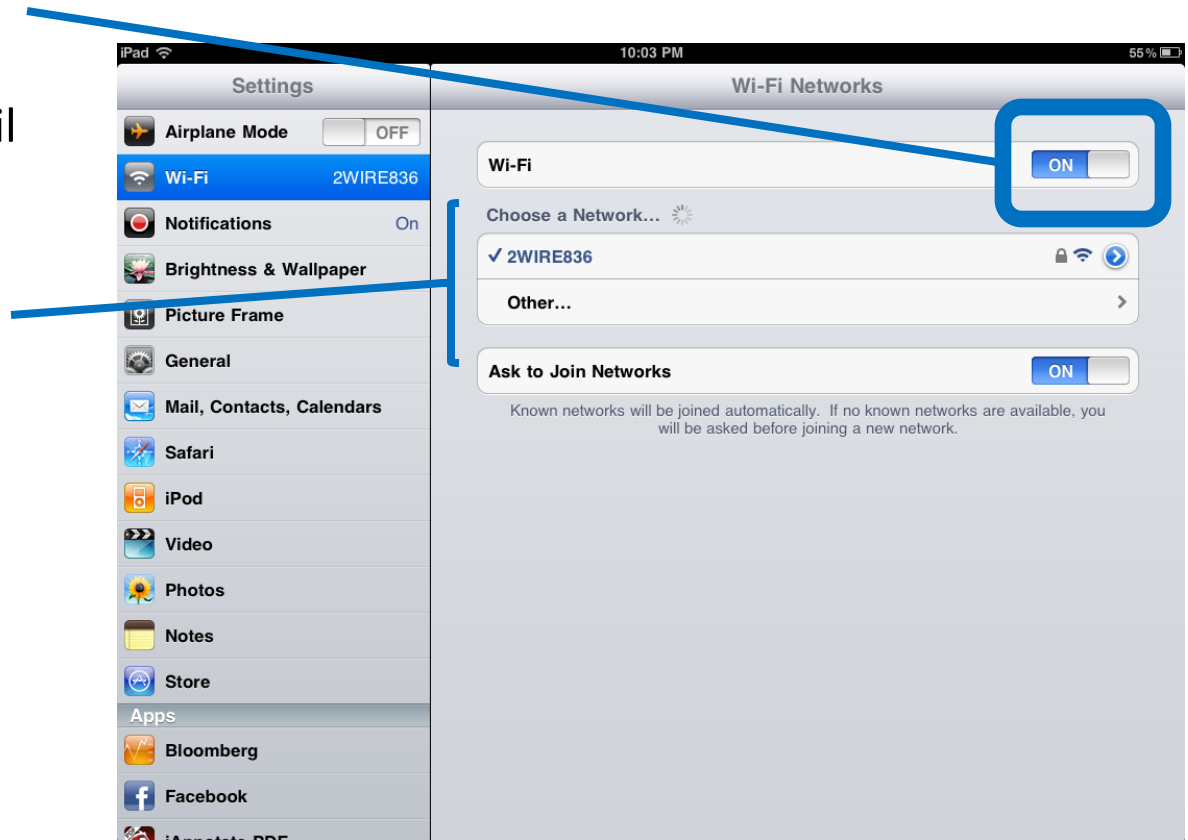


Using Wi-fi

- This button says “Off.” Put your finger on the button and slide right until it says “On.”

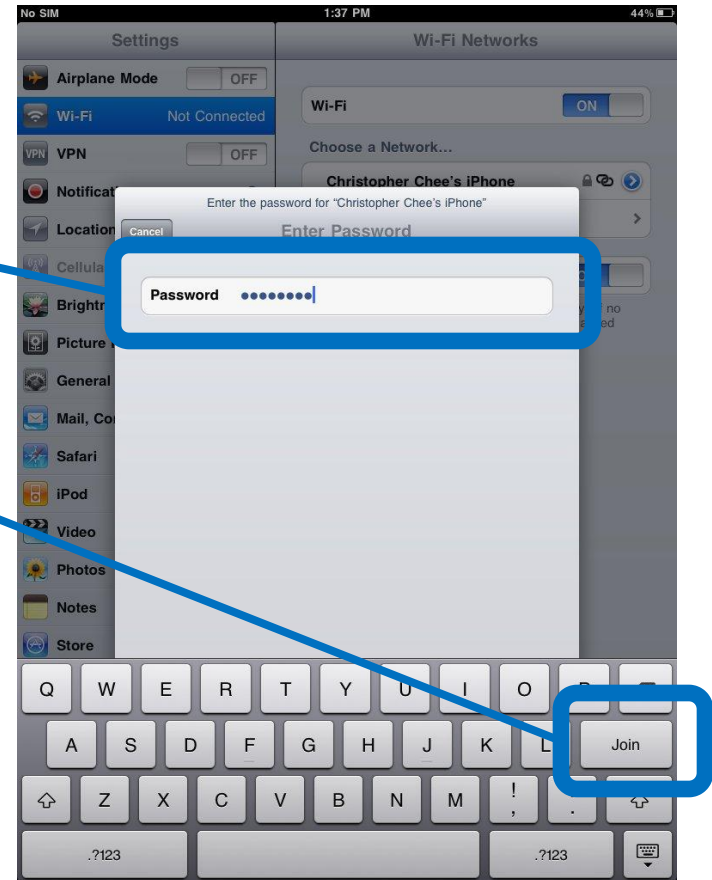
- You can connect to the internet through one of these **Networks**. Tap a network to connect.

- If you see a **picture of a lock**, it means you need a **password**. Ask someone who works in the building for the **wi-fi password**.



Using Wi-fi

- Use the keyboard to type in the password.
- Tap “Join.”



Using Wi-fi

- Once you've finished joining the network, press the **Home button** to return to the Home screen.
- You can now open **Safari** and browse the internet with your wireless connection.

